

# Long Cane *Currents*

Upper Long Cane Presbyterian Church  
Monthly Newsletter  
JULY 2021

SESSION OFFICER WORKDAY  
SATURDAY JULY 10TH  
1:00 PM—5:00 PM

### SESSION WANTS YOUR SUGGESTIONS

If you have ideas or goals (activities, ministries, events, worship concepts, etc.) please relay those to a session officer prior to 7/10. Or you may write your advice and leave the slip in the suggestion box in the narthex. Session decides on the future of our church and to them your opinions matter greatly!



Join us on the first Sunday of the month for Coffee & Donuts at 10:30 am in the fellowship hall.

PROVIDED BY CIRCLE No. 2

# welcome

Please Join The Session  
Of Upper Long Cane Presbyterian Church  
In Welcoming To Our Membership  
*Rick & Ann Campbell*

**FIND US ONLINE** Upper Long Cane is continuously working on new ways to connect with our members and others who need to hear the Gospel. Like and share our social media pages so others can find us!

Facebook [@UpperLongCanePresbyterianChurch](https://www.facebook.com/UpperLongCanePresbyterianChurch)

Instagram [@upperlongcanepc](https://www.instagram.com/upperlongcanepc)

YouTube: Upper Long Cane Presbyterian Church

Website: [www.upperlongcane.net](http://www.upperlongcane.net)

A vibrant graphic for a summer event. It features a wooden sign with the words 'Summer SPLASH' in white, surrounded by beach-themed items like a beach umbrella, palm leaves, a beach ball, and starfish. The background is a bright blue sky with birds.

**WATER SLIDE FUN**  
**SATURDAY, JULY 24TH**  
**10:00 AM — 2:00 PM**  
**HOT DOGS SERVED**  
**FREE COMMUNITY EVENT**



# ANNUAL FISH FRY

Hosted by Long Canites Was Great Success



The annual fish fry was a good time for all ages. The fish were fried to perfection and if anyone walked away hungry, it was their own fault! We enjoyed the time to fellowship with one another. Many thanks to all the cooks! See more on Facebook @UpperLongCanePresbyterianChurch

## PUBLICATIONS

If you have announcements, news or photos which could be published in the newsletter, bulletin, or online; or if you have contact information for someone who would like to receive copies, please send them to the church office: 366-4340 or [ulcpc@wctel.net](mailto:ulcpc@wctel.net).



### THE BAPTISM OF Hollis Maren Norman TOOK PLACE ON SUNDAY, JUNE 13, 2021.

Hollis is the daughter of Casey & Andrea Norman, the granddaughter of Rob Norman & Kristi Norman, and the great-granddaughter of Wayne & Vicki Evans.



Thank you for your overwhelming generosity with the appreciation gift! Most importantly, thank you for offering a wonderful, Godly place to work and raise a family. I am forever grateful!

With gratitude,  
Jennifer Pruitt

## REMINDERS

- We have resumed our pre-coronavirus schedule for most all services, activities, and groups. We will continue to stream our Sunday services on Facebook Live for those who cannot attend worship in person. See the monthly calendar for upcoming events.
- Approved session minutes are posted monthly on the bulletin board & hall info table.
- Men of the Church will not meet during summer

## JULY WORSHIP ASSIGNMENTS

### Nursery

- 4 Kelly Simpson
- 11 Gail Gambrell
- 18 Alison Henderson
- 25 Ann Campbell

### Children's Church

- Angie Latham
- Anna Haynes
- Andrea Norman
- Ann Leigher

## Elder of the Month: Chris Haynes

*CC Lesson Plans are ordered by date and stored in the CC/Discovery Classroom. You may take your Sunday's material the week prior to prepare.*

### UPPER LONG CANE PRESBYTERIAN CHURCH MAY 2021

FUNDS:	GENERAL	BUILDING	DESIGNATED	LIBRARY	TOTAL
BEG BALANCE	\$27,926.64	\$1,708.84	\$12,768.25	\$644.52	\$43,048.25
INCOME +	\$8,532.00	\$1,040.00	\$6,210.00	\$0.00	\$15,782.00
TRANSFER +	\$0.00	\$0.00	\$0.00	\$0.00	\$0.00
ADJUSTMENT* +	\$0.00	\$0.00	\$0.00	\$0.00	\$0.00
SUB-TOTAL	\$36,458.64	\$2,748.84	\$18,978.25	\$644.52	\$58,830.25
EXPENSES -	\$7,512.58	\$625.00	\$210.00	\$0.00	\$8,347.58
TRANSFER -	\$0.00	\$0.00	\$0.00	\$0.00	\$0.00
ADJUSTMENT* -	\$0.00	\$0.00	\$0.00	\$0.00	\$0.00
END BALANCE	\$28,946.06	\$2,123.84	\$18,768.25	\$644.52	\$50,482.67
<b>DESIGNATED FUND ITEMS</b>					\$50,482.67
			Sound System	\$14,840.00	
			Flower Fund	\$35.00	
			Heat/AC Fund	\$85.25	
			UCMAC	\$20.00	
			Roof Fund	\$3,788.00	
			Harbor Simpson		
			DF BALANCE	\$18,768.25	

New Covenant Growth Fund: \$51,457.95 as of 3/31/2021



Learn more about the Presbyterian Church (U.S.A.) at [www.pcusa.com](http://www.pcusa.com)

**O taste and see that the Lord is good; happy are those who take refuge in him.**

Psalm 34:8

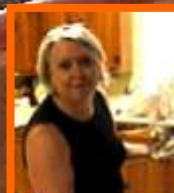
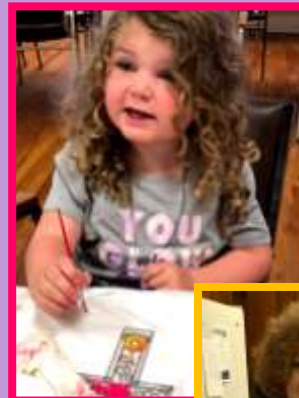




**UPPER LONG  
CANE**

**VBS  
2021**

**WAS AMAZING!**

A central graphic with a green background and a colorful striped border. It features a cartoon illustration of a church with a steeple and a sun, with several children playing in front of it. The text 'UPPER LONG CANE' is at the top, 'VBS 2021' is in the middle, and 'WAS AMAZING!' is at the bottom.

**LONG CANE CURRENTS**  
**UPPER LONG CANE PC (U.S.A.)**  
**194 HIGHWAY 20**  
**ABBEVILLE, SC 29620**

Address Correction Requested

Visit <http://www.upperlongcane.net/> to browse church info, the *Currents* and calendar events.  
 Find us on Facebook: <https://www.facebook.com/UpperLongCanePresbyterianChurch/>  
 Forward media suggestions, photos and articles to the church office.

Recorded worship services are available. Phone the church office at 864-366-4340 to request a copy.

If you would like to assist Upper Long Cane reduce resources by viewing *Currents* online or via email, contact the office at [ulcpc@wctel.net](mailto:ulcpc@wctel.net) to be removed from the mailing list.

**THE SESSION**

<b>CLASS OF 2021</b>	<b>CLASS OF 2022</b>	<b>CLASS OF 2023</b>
Melvin Clark, Sr. Angie Latham Marsha Patterson Glenda Pruitt	Edna Faggart Anna Haynes Robert Hedden Josh Henderson	Ann Leigher Barry Leigher Kelly Simpson Chris Haynes

**MISSION STATEMENT**

The Upper Long Cane Presbyterian Church of Abbeville, South Carolina, supports the Great Ends of the Church as presented in the *Book of Order*. We are a community of believers, diversified in our thinking but united in our purpose. We welcome into our congregation all persons who wish to worship and who wish to be in service to God. It is through God's grace and guidance that we grow in faith and as we grow in faith we minister to the spiritual as well as to the physical needs of each other and of our community.

*Approved by The Session, May 20, 1998*

Upper Long Cane Presbyterian Church (PCUSA)  
 194 Highway 20, Abbeville, SC 29620  
 Office: 864-366-4340

E-Mail: [ulcpc@wctel.net](mailto:ulcpc@wctel.net)  
 Website: [www.upperlongcane.net](http://www.upperlongcane.net)  
 Office Hours: Mon. - Thurs., 8:00 am - 1:00 pm